



IMPACT OF EMPLOYEE MORALE ON ORGANISATIONALDEVELOPMENT – A STUDY WITH REFERENCE TO MANUFACTURINGCOMPANIESIN ANDAROUNDCHENNAI.

3156

K.MUTHARASI*,Dr.M.THAIYALNAYAKI**

*(Ph.DResearchScholar),**ProfessorandResearchSupervisor

Department of Commerce, VELS Institute of science and Technology
andAdvancedstudies (VISTAS), Pallavaram, Chennai-600117.

Correspondingauthor:Dr.M.THAIYALNAYAKI.

INTRODUCTION

Inthepresentheavycompetitioninthemanufacturingsectoritisthedutyofalltheorganiza
tiontocreatecompetitivenessamongtheemployeesandresponsibilities to work for
the organizational development. It requires employeesdedication and their morale
to participate inall the organizational activities withcritical enthusiasm. The
organizational development, organizational efficiency are thestraight forward
outcomes of employees operation and morale. It is useful for theemployees to
resolve many problems among them and also they are able to meet
thecontingenciesduringemergencyperiod.Theorganizationsarewillingtoimpartemplo
yees morale by motivating the employees through monetary and non-
monetarymotivations

DOI Number: 10.14704/nq.2022.20.11.NQ66327

NeuroQuantology 2022; 20(11): 3156-3173

**Zahra noroozinejadfarsangi
&malikeh beheshtifar.2014.**

The positive spirit of
employees and the superior
execution of work,
theirtranscendentalinvolvem
entinthjobareabletocontrib
utesignificantly
fortheemployees
development. The reliability
of employees and their
principle
motivationformtheorganizati
ontohaveemployeesmoralear
ematchedeachotheratthepoi
ntof organizational
development. The
organizations are
endeavoring to impart a
positiveconfidence among

the employees to have
credibility, integrity and
morale towards
theorganization. The
confidence of the employees
in achieving all the
organizationalgoalsthroughth
e cooperationof the
organizationinthe formof
motivationandencouragingm
orale
amongtheemployees**usha
tiwari.2014.**

Thereisatendencyam
ongtheemployeeestoparticipa
teinalltheorganizationalactivi
tiesbesidestheirdesignation.I
tisadequatefortheorganizatio
n
togetthecooperationfromthe



employees and it is occurring through the solitary representatives of the employees with full responsibilities is able to increase the organizational development. Morale is an intangible aspect which is supporting the group of employees to have attachment towards the organization. In fact it is perceived by the employees that the morale shows the loyalty and responsibility towards the organization. The trust and openness of the employees, self-worthiness of the employees and their interest in achieving the organization goals are creating the encouraging employees morale. The employees and the organizations have good faith in the leadership of the employees as well as the organizational development. Employees morale can be considered as a confidence imparted by an organization through optimistic rules and regulations. The optimism experienced by the employees are able to show their morale in the form of duty, dignity and discipline. **Suryarashmi rawat. 2015.**

The employees willingness to follow the strict discipline for the organizational development. It can be ascertained from several research works that the morale is able to influence the organizational development. In fact it is the combination of two related

factors of employees and the organization. In human resources employees morale is also related to job satisfaction of the employees, external feeling of the employees and their responsibilities. The personal well-being also motivates the employees to be highly morale and also offer them good satisfaction. There is a significant importance in demanding the employees morale for all the organization. The employees morale is very aggressive and create conducive environment for the employees to learn, new innovative ideas. It is also found from the several research works that hierarchical atmosphere is also an example for significant difference in the morale level of the employees. The employees in the manufacturing companies are able to give their own suggestions through their morale to keep the organizations development and avoiding unnecessary expenditure. **Samithamby senthilnathan & kamalachandranrukshani. 2015.**

LITERATURE REVIEWS

Ashraf Tag-Eldeen & Mona Barakat, Hesham Dar.



(2017) In this researchwork
the authors clearly found
that employee satisfaction is
also one of the
importantaspectsinfluencingt
heemployeemorale.Itisfound
fromthestudythatemployee



morale is directly depending upon employee satisfaction which is depending upon employee welfare measure, work environment and supervisory support and career development opportunities in this organizations. It is also identified that employee morale will be in the higher position when the employees are fully satisfied about their job.

Osama samih shaban, ziad al-zubi, nafez ali, atalla Alqotaish. 2017 It can be easily identified from this research work that there is a significant association between employees morale and their skill and knowledge developmental opportunities in the organization. It is further identified that employees are able to comprehend a conducive atmosphere for their skill and knowledge development. In this organizations employees are persuaded by the employer to show their loyalty and to remain in the same organization without any turnover intention. This shows that higher the turnover then lower will be the employees morale. The employees are willing to shift the organization because of the poor compensation and they

are not given right opportunities and promotions.

Nyongabsen hillary & dr. Balu. 2018. In another research work it is found that employees morale is also related to organizational effectiveness. It is identified from the research that there is a deep association between employees morale and organizational effectiveness especially work place satisfaction, job rotation, employee benefits and co-workers support. There are all these factors that empower the employees morale and their turnover intention.

Ngambi. 2011 In another research work concentrated on relating the employees trust, employees loyal spirit are directly related to employees morale. It is further identified from that study that employees spirit is expected to be positive towards maximum productivity and profitability of the organization. This spirit becomes optimistic in nature to increase employees morale when the employees are highly satisfied with the work and their productivity of the organization. They wanted to show their loyalty in the form of employees spirit to get all the benefits.



Aftergettingthe benefits
theemployees morale seem
tobeveryhigh.

**Karen e,Mishra,
gretchen, m, Spreitzer &
aneil, k,
Mishra.1998**Theseauthorspr
ofoundlyidentifiedthatemplo
yeesoverallsatisfactionandth
eircontributiontothedevelop
mentandproductivityoftheor
ganizationisaindicatorfor



their morale. The employees with positive thinking in their organization and their workplace conducive atmosphere are directly improving their morale. It is found from the study that increment of the worker spirit and representation and education of all the activities are resulting in good profitability. The employees in the organization with good profitability are able to improve the morale due to job security and high benefits. The customers with high morale are very loyal to their organization and have intention to stay in the organization.

Jianguanglung

dangmei & prof. Amarendra pratap singh.

2017. These authors clearly elucidated that employee satisfaction, their representation for the organizational development are the determinants for employee morale. The welfare measures and grievances of the employees solutions are found to influence the morale level of the employees. It is also found from the study that accommodation of the employees to the right job, sufficient welfare measures to retain the

employees and aggressive measures to extract productivity and profitability are the major factors influencing the employees to have high morale. It is also found from the study that the employees with very good aggressiveness are appropriately retained and improved their morale.

Daeij al hosni & dr.

M. Firdouse rahman khan.

2016 In another study the researcher found that employees and their satisfaction with dissolving the issues within the organization is deeply associated with the employee morale. The influence of employee morale is found to influence the execution and scale of employees and their involvement in the profitability in the organization. In this research work they identified that the effectiveness of the organization is directly linked to organizational profile. The outcomes are clearly indicated that there are both internal and external components which are related to workers' problems and resolutions are linked to employee morale.



GAPS IN THE LITERATURE

After reviewing the national and international literature pertaining to employee morale the researcher is able to identify two important research questions are not fully touched and answered by the previous research work. Therefore the present research work is intended to fulfill the following gaps.



1. How many components are there to represent the employees morale in the organization.

2. Is there any significant relationship between employees morale and organizational productivity, profitability and cultural changes in the organization.

HYPOTHESIS

➤ There is no significant difference among the components of employee morale in manufacturing companies.

➤ There is no significant influence of employee morale over the employees outcomes and satisfaction.

OBJECTIVES OF THE STUDY

1. To study and validate the components of employee morale in manufacturing companies.

2. To identify the significant influence of employees morale on employees satisfaction, job rotation and satisfaction level.

METHODOLOGY

This study is unique and it is depending upon both analytical and descriptive

nature of approach. This study is clearly depending upon both primary and secondary data. The primary data is obtained from the respondent of employees in the manufacturing companies. Their opinion is systematically ascertained by the well-structured questionnaire. The questionnaire reliability and validity are checked during the course of pilot study. The pilot study is done under the circumstances of convenience sampling method. The interested employees working in a manufacturing company are showing enthusiasm to talk about the morale in the organization.

The well-structured questionnaire is circulated and during the pilot study stage the reliability and validity are verified. All these two values are satisfying the benchmark values. Hence the questionnaire is reliable and further used in the main study.



Main study data collection attain the researcher apply convenience sampling method to collect the responses from the manufacturing companies which are highly repeated. These companies and their employees are willing to give their opinion in order to make the perfect operations of HR in these companies. After obtaining the successful results the researcher intended to take up the main study data collection. The main study data collection is achieved through the convenience sampling method. The researcher is able to get 270 usable sample size through simple random sampling method.

After collecting the data the researcher systematically entered them in SPSS and other computer packages version 23. It is further identified through the methodology that the convenience sampling is able to represent the population parameters due to the rationality and justified responses from their respondents.

After entering the data of main study in the excel package it is systematically transferred into SPSS package version 23 and the researcher used the following statistical

tools namely 1. Simple Percent age Analysis 2. T test 3. Oneway analysis of variance and 4. Linear multiple regression analysis.

ANALYSIS AND DISCUSSION

In this section the researcher intended to identify what are all the different components of employees morale therefore the questionnaire consists of 25 questions regarding employees morale in likert's five point scale which ranges from strongly agree to strongly disagree. Therefore the researcher applied exploratory factor analysis on these 25 variables on employees morale and derived the following results.





Table-1Numberoffactorsofemployeemorale.

Component	InitialEigenvalues			RotationSumsof SquaredLoadings		
	Total	%ofVariance	Cumulative%	Total	%ofVariance	Cumulative%
1	9.774	39.095	39.095	4.097	16.388	16.388
2	2.789	11.158	50.253	3.486	13.946	30.333
3	1.079	4.317	54.569	3.340	13.359	43.692
4	.940	3.761	58.331	2.358	9.433	53.125
5	.906	3.626	61.957	2.208	8.832	61.957
6	.827	3.307	65.263			
7	.774	3.095	68.358			
8	.734	2.937	71.295			
9	.676	2.703	73.998			
10	.611	2.444	76.442			
11	.588	2.354	78.796			
12	.556	2.222	81.018			
13	.526	2.104	83.122			
14	.492	1.968	85.090			
15	.464	1.856	86.946			
16	.434	1.736	88.683			
17	.414	1.655	90.338			
18	.396	1.585	91.922			
19	.375	1.501	93.424			
20	.345	1.379	94.803			
21	.339	1.355	96.157			
22	.303	1.213	97.371			
23	.241	.966	98.336			
24	.217	.868	99.204			
25	.199	.796	100.000			

3166

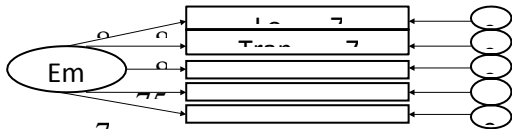
Fromtheabovetableit isfoundthat25variablesarereducedintofivepredominant factors and considerable

amount of variance which is highly significant.The fivefactorswhichare named asLoyalty,Transparency,



Employee Benefits, Career Elevation and Training and Development. These are all the five factors derived from the 25 variables of employee morale. After deriving these five factors through

confirmatory factor analysis. The researcher intended to confirm them using confirmatory factor analysis. The results of confirmatory analysis are clearly presented below.



69

Table 2-MODEL FIT INDICES AND BENCHMARKS.

S.NO	Fit indices	Values	Benchmark values
1	Chi-square	6.378	-
2	P-value	0.532	>.05
3	Goodness of fit index (GFI)	0.991	>.9
4	Comparative fit index (CFI)	0.989	>.9
5	Normed fit index (NFI)	0.987	>.9
6	Root Mean Square Error of Approximation (RMSEA)	0.07	<=0.08

From the above table it is found that the six fit indices, chi-square value, p-value, confirmatory fit index, normed fit index, goodness of fit index and root means square error of approximation they satisfied their respective benchmark values. Therefore the five factors loyalty, transparency, employee benefits, career elevation and training for employees are able to predict the existence

of employees morale among the employees in the Manufacturing companies. The confirmatory factor analysis is also given by the diagram and each factor asks the variance which is greater than 0.3. After the confirmation the researcher intended to find the impact of



employees morale on organisational development. This similar approach of exploratory factor analysis on the organisational development variables which are 15 in number is applied and the following results are obtained.

Table 3-Number of factors of Organizational development

Component	Initial Eigenvalues			Rotation Sums of Squared Loadings		
	Total	% of Variance	Cumulative %	Total	% of Variance	Cumulative %
1	7.016	46.773	46.773	3.322	22.145	22.145
2	1.412	9.416	56.189	2.586	17.237	39.383
3	.855	5.703	61.892	2.185	14.570	53.952
4	.821	5.476	67.368	2.012	13.416	67.368
5	.696	4.642	72.010			
6	.638	4.252	76.261			
7	.541	3.609	79.871			
8	.518	3.453	83.324			
9	.484	3.224	86.548			
10	.419	2.790	89.338			
11	.414	2.757	92.095			
12	.332	2.213	94.308			
13	.308	2.051	96.360			
14	.280	1.867	98.227			
15	.266	1.773	100.000			

The research clearly revealed that there exists four predominant factors out of 15 variables of organisational development

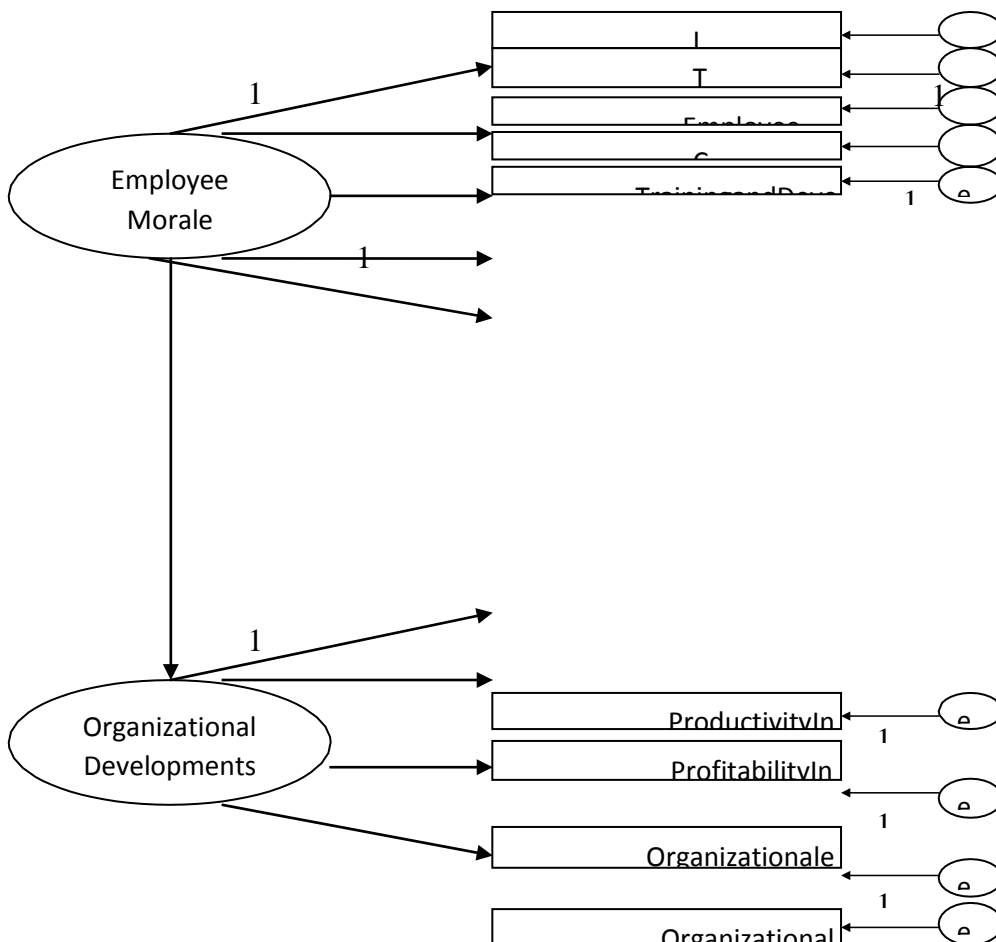
namely productivity increase, profitability increase, organisational efficiency and organisational culture. These are all the



four factors of organisational development. These four factors and their total average scores considered as dependent variables. The five factors of employees morale and their average score is considered as independent variables. The influence of five independent variables and four dependent factors is established through confirmatory factor analysis and linear multiple regression analysis. The combination of confirmat

ory factor analysis and linear multiple regression analysis is otherwise called as structural equation model. Therefore the application of structural equation model over the five independent employee morale factors, loyalty, transparency, employee benefit, career elevation, training and the four dependent factors of organisational development is clearly presented below.

1



1



Table2-MODELFITINDICESANDBENCHMARKKS.

S.NO	Fitindices	Values	Benchmarkvalues
1	Chi-square	9.100	-
2	P-value	0.631	>.05
3	Goodnessof fit index(GFI)	0.987	>.9
4	Comparativefit index(CFI)	0.986	>.9
5	Normedfitindex(NFI)	0.985	>.9
6	Root Mean SquareErrorof Approximation(RMSEA)	0.07	<=0.08

From the above diagram of structural equation model and the fit indices values it is found that all the six fit indices satisfy the bench mark value to prove the impact of employees morale on organisational development with respect to employees perception in Manufacturing companies at 95 percent level of confidence.

FINDINGS AND CONCLUSION

Employee morale is not a unique phenomenon whereas it is a conglomeration of five important crucial factors namely loyalty towards the organisation, transparency in the communication, employee benefits both intrinsically and extrinsically and career elevation for their own purpose and for

organisational purpose and appropriate training to improve knowledge and skills are the important factors directly influencing employees morale. Similarly the organisation development in manufacturing industry can be ascertained through the four important factors productivity increase, organisational performance increase, profitability and total cultural changes to reach the organisational goals. It is also found that there is significant influence of employee morale on organisational development. This particular research paper proved that the existence of morale among the employees in manufacturing companies is useful for the organisation to achieve their productivity, profitability and change in the culture of the organisation for development.



It also plays a very important role in deriving the profitability and organisational performance and its heavy competition in the manufacturing sector.

REFERENCES.



- Ashraf Tag-Eldeen & Mona Barakat, Hesham Dar. 2017. Investigating the impact of workplace bullying on employees' morale, Performance and Turnover Intentions in five-star Egyptian hotel operations, *Tourism and Travelling*, 1: 4-13.
- Caren Louma. 2017. Relationship Of Employees Morale And Retention Within Higher Learning Institutions In Kenya: A Case Of Cooperative University College Of Kenya, *International Journal Of Innovative Research & Development*, 6(8): 308-326.
- Daeijalhosni & dr. M. Firdouser ahmankhan. 2016. The Effect Of Security Procedures On Employee Morale, *International Journal Of Innovations & Entrepreneurial Research*, 2(2): 24-33.
- Jianguang lung dang mei & prof. Amarendrapratapsingh. 2017. How Aesthetic Leadership Style Might relate to Employee Morale at Workplace? An Analytical Study, *Asia Pacific Journal of Research*, 1(55): 203-206.
- Karen e, Mishra, gretchen, m, Spreitzer & aneil, k, Mishra. 1998. Preserving Employee Morale During Downsizing, *Sloan Management Review*, 39(2):83-95.
- Ngambi. 2011. The Relationship Between Leadership And Employee Morale In Higher Education, *African Journal Of Business Management*, 5(3):762-776.
- Nyongabsen hillary & dr. Balu. 2018. The Effect of Employee Relation on Employee Morale at St. John's Medical Hospital, Bengaluru, *International Journal Of Engineering Technology Science And Research*, 5(3): 369-373.
- Osama samih shaban, ziad al-zubi, nafez ali, atalla Alqotaish. 2017. The Effect of Low Morale and Motivation on Employees' Productivity & Competitiveness in Jordanian Industrial Companies, *International Business Research*, 10(7):1-7.
- Samithambysenthilnathan & k amalachandran rukshani. 2015. Impact Of Organizational Trust On Employee Morale, *Elk Asia Pacific Journal Of Human Resource Management And Organisational Behaviour*, 1(2): 1-25.
- Surya rashmi rawat. 2015. Impact Of Transformational Leadership Over Employee Morale And Motivation, *Indian Journal Of Science And Technology*, 8(6):25-34.



ushatiwari.2014.A Study
On Employee Morale And Its Im-
pact On Employee Efficiency
At Jaypee Cement Plant Rewa
(M.P.), Abhinav International M-
onthly Refereed Journal
Of Research In Management &
Technology, 3(11): 8-14.
Zahranoroozinejadfarsangi &
malikeh beheshtifar. 2014. Rel-
ationship Between Employees
' Moral Distress And Their
Personal Conflict, Journal Of
Social Issues
& Humanities, 2(9): 117-123.

